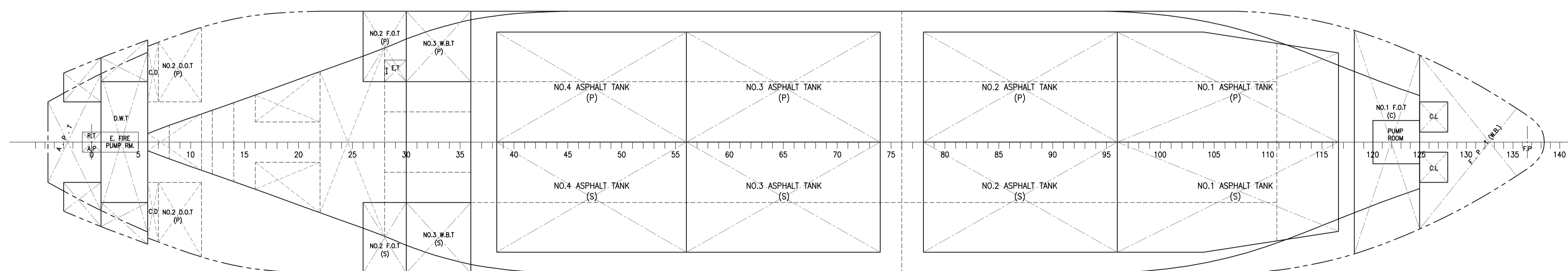
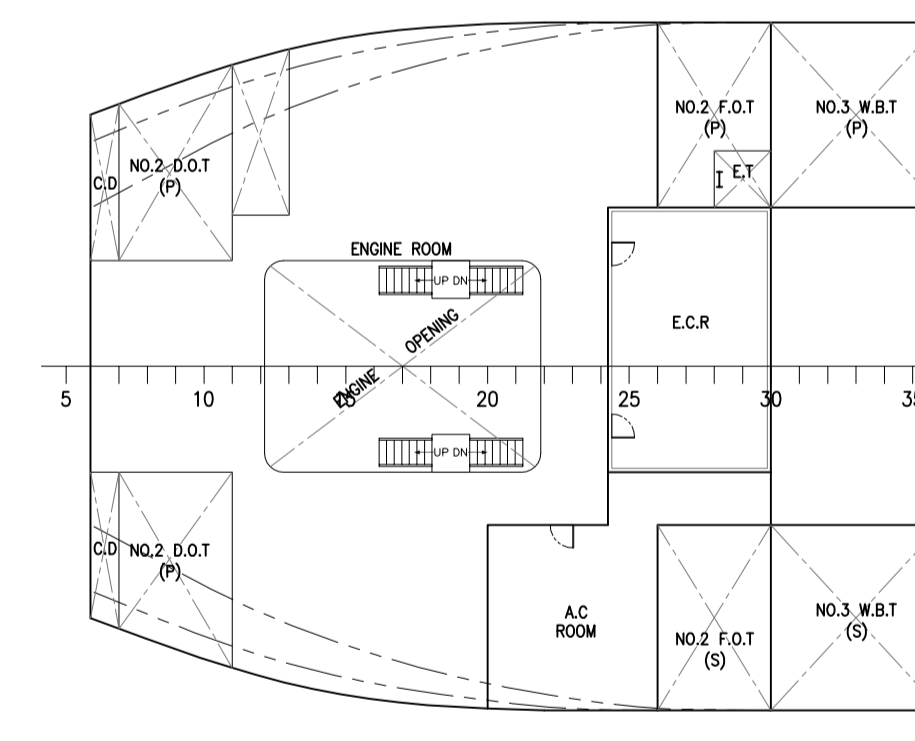
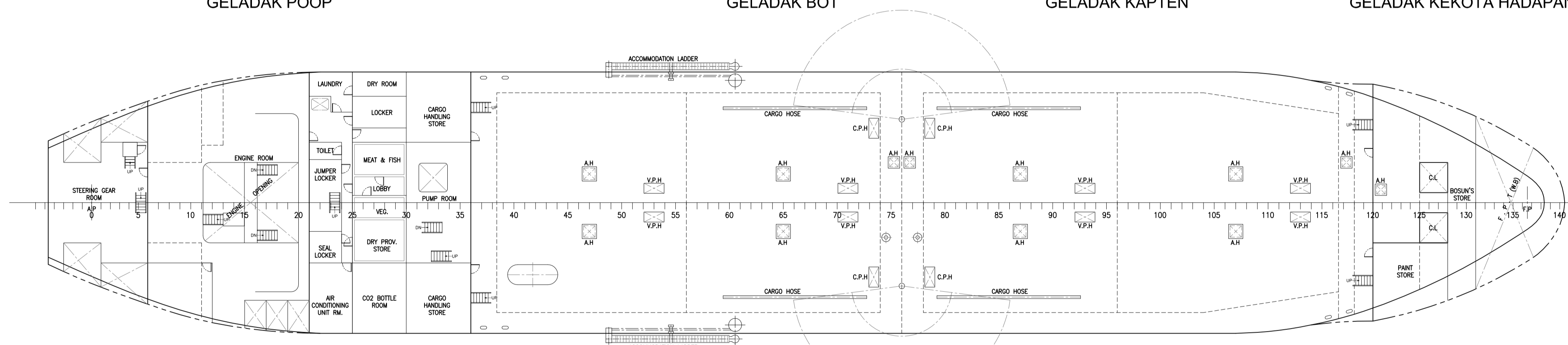
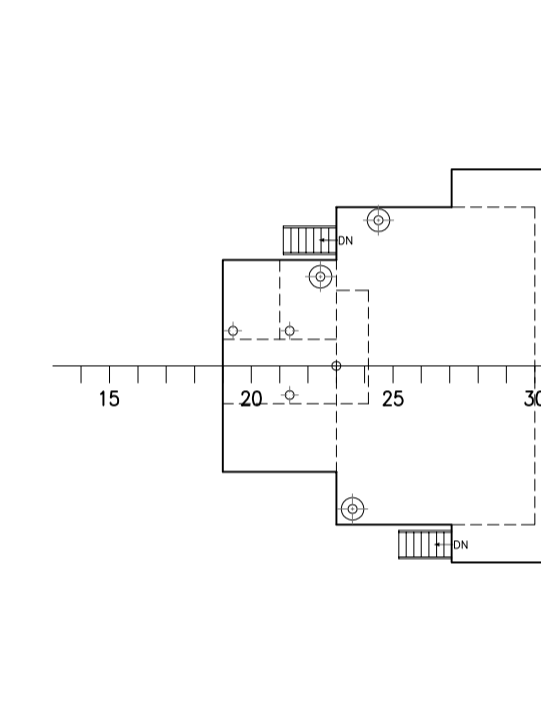
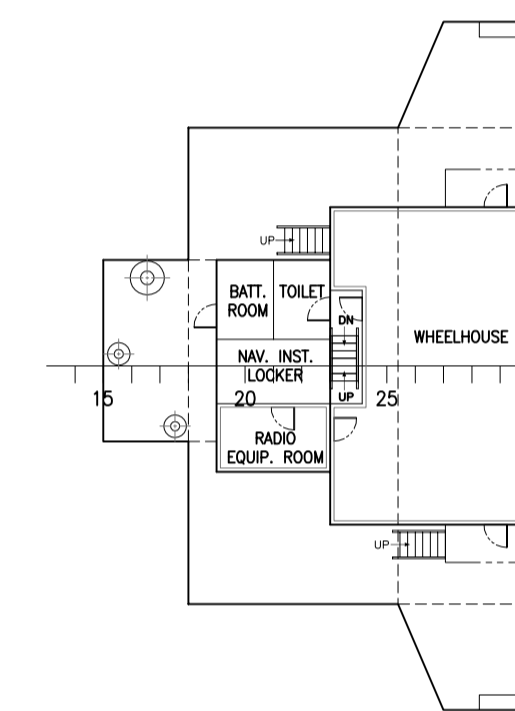
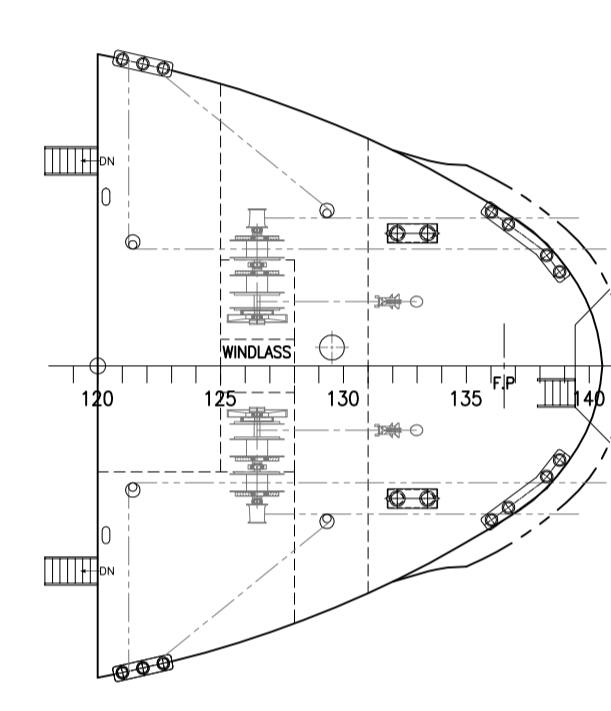
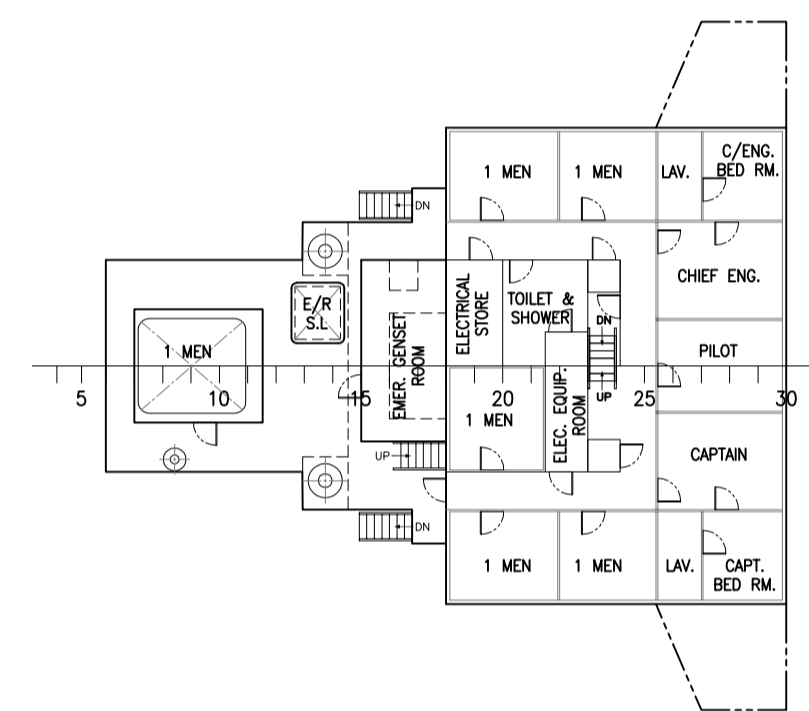
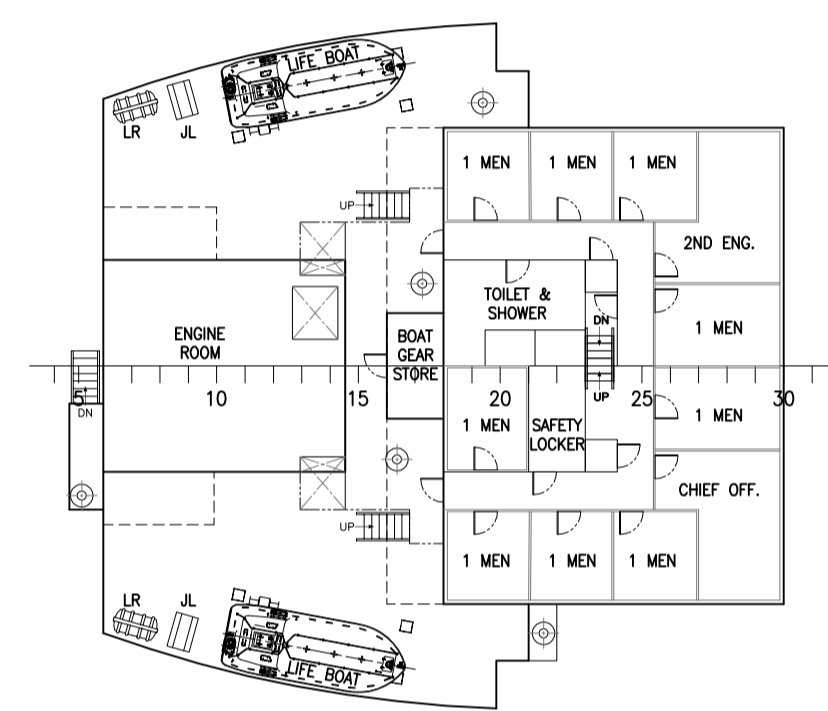
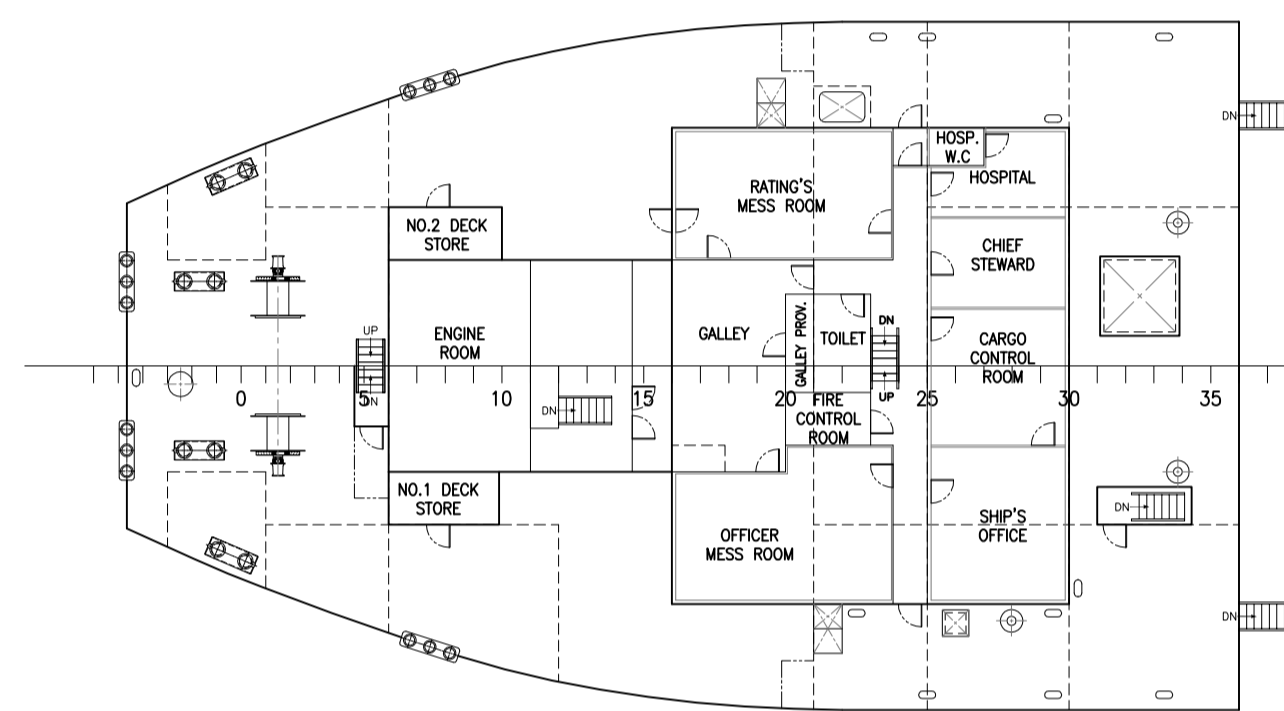
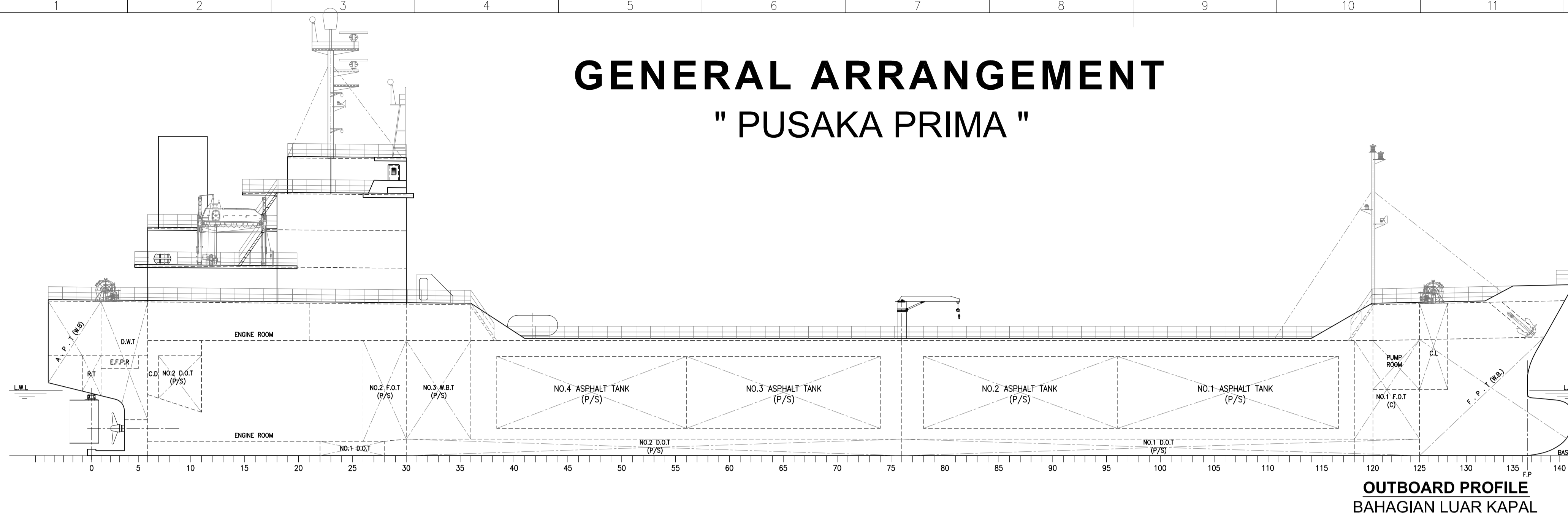



GENERAL ARRANGEMENT " PUSAKA PRIMA "

PORT REGISTRY PERLABUHAN PENDAFTARAN	PORT KELANG
GROSS TONNAGE TANAN KASAR	4268
CALL SIGN ISYARAT PANGGILAN ANTARABANGSA	9MWY9
OFFICIAL NUMBER NOMBOR RASMI	336795
IMO NUMBER NOMBOR IMO	9154141
COMPLEMENT JUMLAH PENGINAPAN	20 PERSONS
PRINCIPAL PARTICULARS	
LENGTH O.A. <i>PANJANG KESELURUHAN</i>	106.18 M
BREADTH MLD <i>LEBAR LUARAN</i>	18.20 M
DEPTH MLD <i>DALAM LUARAN</i>	08.00 M
DRAFT MLD <i>DRAF LUARAN</i>	04.52 M



SHIP: PUSAKA PRIMA 106M ASPHALT CARRIER		REDRAW / TRANSLATED BY:	
TITLE: GENERAL ARRANGEMENT		 NAVARCH MARINE SERVICES No.67B, LEVEL 2, PKNS BIZPOINT, JALAN PLUMBUM P7/P SECTION 8, 40000, SHAH ALAM, SELANGOR email: navarchmarine@gmail.com website: www.navarchmarine.com	
OWNER: MAY TANKER SDN BHD	CLASS: NK		
BUILDER: SHIN KURUSHIMA DOCKYARD CO. LTD. JAPAN	HULL NO.:		
DRAWN: RAF	CHECKED: ATA	APPROVED: -	DRAWING NO. RF_148R_G_001
			SCALE: 1 : 200
			DRAWING SIZE: A1
			REVISION: 0